



LinkProof™ : Internet Link Traffic Management

Radware's LinkProof™ is a comprehensive, easy to use content traffic management solution for networks with multiple links. Increasingly, organizations such as e-commerce companies, second tier ISPs, and enterprises are turning to this "multi-homed" design in order to guarantee 100 percent continuous Internet access and an uninterrupted connection between company branches, suppliers and clients.

Specifically designed for the unique requirements of multi-homed networks, Radware's Optimal Content Routing technology assures the fastest content delivery to your users. LinkProof guarantees complete network availability and offers a fully scalable solution that grows with your network needs. It provides an innovative and complete content based traffic management solution for multi-homed networks that need to be certain in their critical business applications.

Fastest Content Delivery

LinkProof's patent pending Optimal Content Routing ensures that specific content is delivered through the best performing link. The proximity to the requested content, the real-time load and the link cost are all considered when determining which link will offer the best performance for that specific content. Thus, end users enjoy optimized service and response time while receiving content that is delivered in the best possible way.

Guarantees Uninterrupted Internet Access

LinkProof continuously monitors the health of each Internet connection. It checks the path

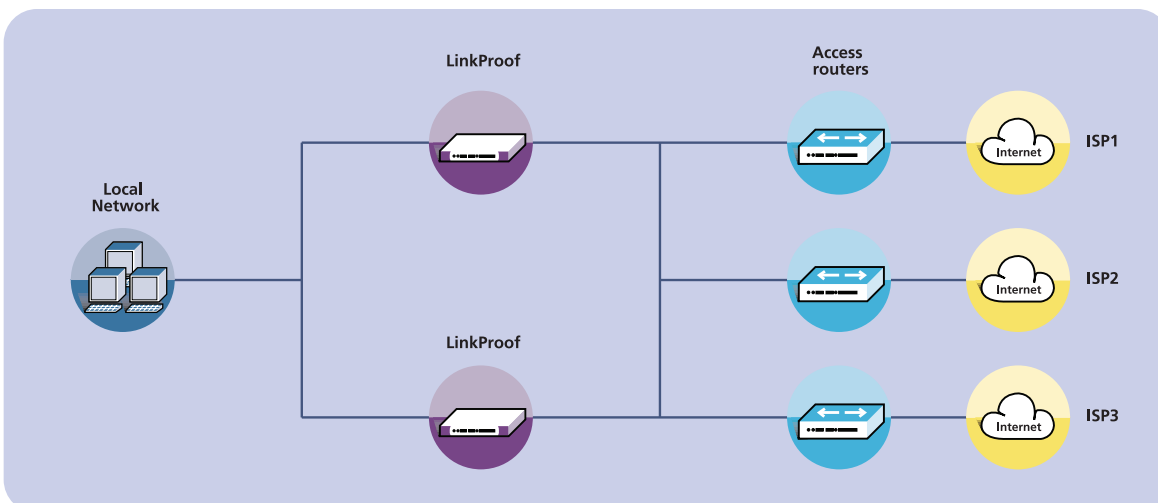
through each router by periodically monitoring the health of internal and external network nodes. LinkProof automatically detects failures such as link, router, DNS server and other failures. This check ensures that only fully operational routes that are functioning at peak efficiency are used. Two LinkProof units can be installed in redundant configuration, thus ensuring high availability for uninterrupted Internet link traffic management even in the event of unit failure.

Delivers Full Scalability

Adding new links and routers is simple, requiring only minimal configuration and no major changes to the network. LinkProof is completely transparent regarding which ISP, link or router is used, and offers you total flexibility to grow your multi-homed network as you need.

Cuts Operational Costs and Eliminates the Complexities of Multiple Links

Deploying redundant Internet connections to multiple ISPs can require highly complicated routing protocols and expensive technicians to maintain the network. It also does nothing to alleviate the problems created by unpredictable traffic patterns. LinkProof keeps the routing simple and efficient by transparently redirecting traffic through the optimal links with no need for user configuration. There is no need for complicated coordination between the different ISPs. Additionally, LinkProof uses Radware's proprietary Smart NAT (Network Address Translation) mechanism to guarantee uninterrupted packet delivery to and from the network.



La Chocolatière 26

CH - 1026 Echandens

Tel. +41 21 706 06 06

Fax +41 21 706 06 00

info@acommm.ch

www.acomm.ch



LinkProof Added Value

• e-commerce

e-commerce sites must be online and available 24 hours a day, 7 days a week. In order to stay competitive, an e-commerce site must respond rapidly to queries and deliver content in the fastest possible way. LinkProof provides high network availability, keeping e-commerce sites operational at all times. In addition, using Optimal Content Routing, it ensures information is always transmitted through the best performing link. This guarantees better service, more satisfied customers, and thus more business.

• Small to Medium-Size ISPs

Quick, uninterrupted Internet access is crucial to every successful ISP business. LinkProof gives ISPs an important competitive edge, ensuring the fastest possible content delivery, along with high scalability and network availability. LinkProof also

enables ISPs to provide better response performance by redirecting the user through the best link to the backbone every time. In addition, LinkProof allows for ISPs to attain new accounts by offering them a second line, which provides availability and fast content delivery without having to coordinate with existing ISPs.

• Enterprises

In large organizations, maintaining multiple links can be cumbersome and complicated. LinkProof keeps the routing simple and efficient by transparently redirecting traffic through optimal links with no need for user configuration. LinkProof ensures that whenever a user requests information, it is always delivered through the best performing link for the specific user and the specific content.



Product Specifications

RISC Processor	MPC 750 266 MHz (Power PC)
Backplane speed	9.6 Gbps
10/100 ports	8
Gigabit Ethernet ports	2
L2 Switching	Wire Speed
RAM	64 Mb (128 Mb)
VLANs	64
Real Servers	10'000
VIP (Virtual IP)	512/3'000
IP Routing Interfaces	2'000
Routing table entries	128'000
Simultaneous Clients	500'000
Simultaneous Sessions	Unlimited
Routing Protocols	OSPF, RIP, RIP II

Network Management

Command Line Interface
HP OpenView for Sun Solaris
Web
SNMP
Telnet
Full GUI

Standards

10BASE-T/100BASE-TX (IEEE 802.3, 802.3u),
1000BASE-SX (IEEE 802.3z), SNMP (1213 MIB-II,
1643 Ethernet, 1493 Bridge), IP, OSPF, RIPv1,
RIPv2, TFTP, BootP, Telnet

1000BASE-SX Ports

Full-duplex Gigabit Ethernet SC fiber connectors

1000BASE-SX Operating Distance

Shortwave (850 nm), 62.5 micron MM fiber .2 to 275 meters, 50 micron MM fiber .2 to 550 meters

10BASE-T/100BASE-TX Ports

10/100 full or half-duplex (auto-negotiation) with RJ-45 connections for UTP ports

RS-232C Console

DB-9 serial connection, female DCE interface for out-of-band management

Dimensions

Width: 432mm
Depth: 475mm
Height: 44mm (Standard 19. EIA rack or standalone)
Weight: 3.5 kg

Environmental

Operating Temperature: 0-40 c
Humidity (non-condensing): 5% to 95%

Power

Auto-range supply: 100-250V 50-60Hz

Certifications

CE, UL, CUL, FCC, VCCI



La Chocolatière 26
CH - 1026 Echandens

Tel. +41 21 706 06 06
Fax +41 21 706 06 00

info@acomm.ch
www.acomm.ch

You wish to discuss it with one of our specialists? To obtain more details? To study an architecture? To contact one of our references without other commitment?

Do not hesitate to contact us, at **021 706 06 06**, or by email at info@acomm.ch