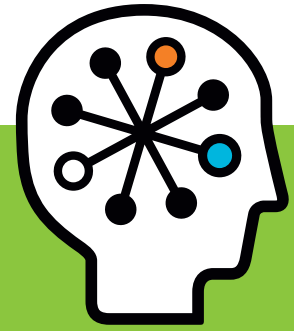




HP SiteScope software

Data sheet



HP SiteScope is agentless monitoring software that helps increase the availability and performance of your IT infrastructure.

Improve the availability and performance of IT environments

HP SiteScope software monitors the availability and performance of distributed IT infrastructures—including servers, operating systems, network and Internet services, applications and application components. HP SiteScope continually monitors more than 75 types of IT infrastructure through a Web-based architecture that is lightweight and highly customizable. With HP SiteScope, you gain the real-time information you need to verify infrastructure operations, stay apprised of problems, and solve bottlenecks before they become critical. HP SiteScope is an important component of both the HP Operations Center software and the HP Business Availability Center software, providing agentless availability and performance monitoring and management.

Reduce total cost of ownership

HP SiteScope reduces your total cost of ownership (TCO) and:

- Gathers detailed performance data for IT infrastructure using agentless technology installed on your managed server or device
- Enables the easy installation and monitoring of IT infrastructure monitoring in less than one hour
- Reduces the time and cost of maintenance by consolidating all maintenance to one central server
- Reduces the time to make administrative and configuration changes by providing templates and global change capabilities

- Enables quick and efficient operations management with automated actions initiated upon monitor status change alerts
- Offers solution templates that include specialized monitors, default metrics, proactive tests, and best practices
- Supports easy customization to provide standard monitoring of previously unmanaged or hard-to-manage systems and devices

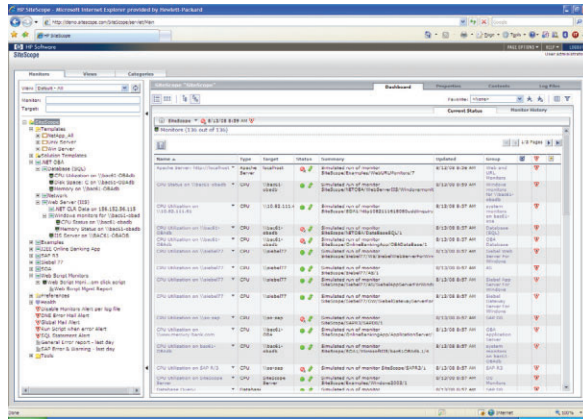
Combining agentless and agent-based approaches

Many IT organizations look to combine agentless and agent-based infrastructure monitoring to provide the breadth and depth you need to make sure performance and availability of critical applications. HP SiteScope's agentless approach, with low-cost installation and maintenance, is complementary to the HP Operations Manager software for agent-based monitoring and granular data collection. Both feed into a consolidated dashboard to improve IT efficiencies and reduce event noise. HP SiteScope can also serve as an ideal starting solution for mid-market customers who are looking for low total cost of ownership.

HP SiteScope can be deployed standalone or as part of HP Operations Center software, HP Business Availability Center software, or HP LoadRunner software implementations. As part of HP Operations Center, HP SiteScope provides agentless monitoring to complement and extend your agent-based monitoring coverage. As part of HP Business Availability Center, HP SiteScope provides key infrastructure metrics to enable you to drill down from business service or application problems to the infrastructure at fault. Lastly, HP SiteScope serves as the monitoring foundation for HP LoadRunner software to better identify bottlenecks during the load-testing phase.

Get real-time IT information

HP SiteScope displays the real-time status of your IT environment.



How HP SiteScope works

HP SiteScope provides a centralized, scalable architecture. HP SiteScope is implemented as a Java™ server application and runs on a single, central system as a daemon process. The HP SiteScope Java server supports three key functions: data collection, alerting, and reporting. All user interaction is accomplished through a Web-based user interface that enables configuration, installation, administration, real-time status, and reporting from one seamlessly integrated console.

HP SiteScope enables system administrators to monitor your IT infrastructure remotely from a central installation without the need for agents on the monitored systems. HP SiteScope accomplishes remote monitoring by logging into systems as a user from its central server, which can run on Windows®, UNIX®, and Linux® platforms. Several log-in formats are supported, including TELNET, rlogin, HTTP, SSH, and NetBIOS.

In addition, HP SiteScope offers optional failover support to give you added redundancy and automatic failover protection in the event that an HP SiteScope server fails. When the HP SiteScope primary server becomes unavailable, a secondary server takes over, providing uninterrupted monitoring.

Key features and benefits

- Features an agentless, enterprise-ready architecture that lowers TCO
- Monitors more than 75 different target types for critical health and performance characteristics; enables proactive alerts before end users experience problems with customizable thresholds
- Offers solution templates that feature built-in domain expertise in the form of specialized monitors, default metrics, proactive tests and best practices for a given application or monitoring component

- Can initiate automated corrective actions such as restarting servers, clearing disk space, and executing commands
- Generates daily, weekly, and monthly summaries of single and multiple monitor readings with built-in management server-based reports
- Provides powerful administrative functions, such as global search and replace, copy/paste, and filter views
- Provides a highly customizable, Web-based user interface that supports role-based views and displays favorites
- Serves as an integrated component of HP Operations Center and the monitoring foundation for HP Business Availability Center and HP LoadRunner
- Monitors Windows, UNIX, and Linux systems, offering comprehensive coverage for the most heterogeneous environments
- Includes flexible notification methods, including standard methods—e-mail, SNMP trap, and pager (including support for SMS devices)—and additional methods, such as post and database alerts. In addition, it has the ability to escalate an alert according to rules defined by the user
- With HP Operations Manager, can deliver a combined agentless and agent-based monitoring solution to deliver the breadth and depth you require
- Rapidly update monitoring and deployment across the entire enterprise using templates and xml
- Reduce false alerts, customize allowable deviations, and establish separate thresholds to address usage based on demand or the time of day using baseline management

Supported IT targets for monitoring

HP SiteScope can monitor the following targets:

Operating systems	Windows NT 4.0, Windows 2000, Windows 2003 AIX HP-UX Linux (most versions, SSH compatibility required) MAC OS X SCO OpenServer SGI IRIX Sun Solaris Tru64 5.x and Tru64 pre-4.x		
System monitors	Composite CPU utilization Database DHCP Directory Disk space File	LDAP Log file Memory News Network NT dial-up NT event log	NT performance counter Radius Script Service UNIX resources Windows resources Windows services state
Application monitors	Apache Web Server ATG Dynamo Application BEA Tuxedo BEA WebLogic Application Server BroadVision Application Server CheckPoint FireWall-1 Cisco Works Citrix MetaFrame Citrix Presentation Server 3.5 and 4.0 F5 Big-IP Monitor IBM DB2	IBM WebSphere Application Server JBOSS AS 4.0 MacroMedia ColdFusion Server MAPI Microsoft Exchange 2007 Microsoft IIS 6.0 Microsoft SQL Server 2005 Microsoft Windows 64-bit Editions NetScape Enterprise/iPlanet Novell SilverStream Oracle 10g Application Server	Oracle® JDBC Real One/Real Media Player and ServerServer SAP GUI Siebel 8.0 SunONE server Sybase database VMware ESX Server 3.x VMware Virtual Center 2.x WebLogic 9.x, 10.x Windows resources (covers most Microsoft applications) XML metrics
Web/URL monitors	eBusiness Chain Link check URL URL content	URL list URL sequence Web Server Web service	
Network service monitors	DNS Formula (bandwidth) composite FTP Mail Network bandwidth Ping	Port Real streaming RTSP (Real Time Streaming Protocol) SNMP by MIB SNMP SNMP trap	
Enterprise application monitors (requires additional license)	VMware, COM+, IBM WebSphere MQ Server, SAP R/3NetWeaver, CCMS, and Web Script monitor		
Solution templates (requires additional license)	BEA WebLogic Application Server 9.x, 10.x IBM WebSphere Application Server 5.x, 6.x JBOSS AS 4.0 Microsoft .NET Microsoft Active Directory Microsoft Exchange 5.5, 2000, 2003, 2007 Microsoft IIS 6.0 Microsoft SQL Server 2005 Operating Systems (AIX, Linux, Solaris, Windows) Oracle Database SAP Siebel UNIX Host (AIX, Linux, Solaris) Windows Host		

Supported platforms for the HP SiteScope server

- Hardware: Intel x86 and Sun SPARC
- Operating systems: Microsoft® Windows (32/64 bit versions) 2000 Server/Advanced Server SP4 or higher, Microsoft Windows 2003 Server/Enterprise Server SP1 or higher; Solaris 9, 10 (Sparc); Red Hat Linux ES/AS 3, 4
- Virtual machines: VMware ESX Server 3.0 and higher, VMware Virtual Center 2.x
- Memory: 512 MB minimum (2 GB+ recommended)
- Free Hard Disk Space: 2 GB or more (10 GB+ recommended)

A complete solution

Comprehensive training

HP provides a comprehensive curriculum of HP Software and IT Service Management courses. These offerings provide the training you need to realize the full potential of your HP solutions, increase your network optimization and responsiveness, and achieve better return on your IT investments.

With more than 30 years experience meeting complex education challenges worldwide, HP knows training. This experience, coupled with unique insights into HP Software products, positions HP to deliver the optimum training experience. For more information about these and other educational courses, visit

www.hp.com/learn

The smartest way to invest in IT

HP Financial Services provides innovative financing and financial asset management programs to help you cost effectively acquire, manage, and ultimately retire your HP solutions. For more information on these services, contact your HP sales representative or visit www.hp.com/go/hpfinancialservices

Contact information

To find an HP Software sales office or reseller near you, visit www.managementsoftware.hp.com/buy

HP Services

HP provides high-quality software services that address all aspects of your software application lifecycle needs. With HP, you have access to standards-based, modular, multi-platform software coupled with global services and support. The wide range of HP service offerings—from online self-solve support to proactive mission-critical services—enables you to choose the services that best match your business needs.

For an overview of HP software services, visit www.managementsoftware.hp.com/service

To access technical interactive support, visit Software Support Online at www.hp.com/managementsoftware/services

To learn more about HP Software Customer Connection, a one-stop information and learning portal for software products and services, visit www.hp.com/go/swcustomerconnection and <http://merc-training.cce.hp.com/main/US/>



*Computer Systems
& Telecommunications*

aComm
La Chocolatière 26
CH – 1026 Echandens

T +41 21 706 06 06
F +41 21 706 06 00

info@acomm.ch
www.acomm.ch

Technology for better business outcomes

To learn more, visit www.hp.com/go/btossoftware

© Copyright 2008 Hewlett-Packard Development Company, L.P. The information contained herein is subject to change without notice. The only warranties for HP products and services are set forth in the express warranty statements accompanying such products and services. Nothing herein should be construed as constituting an additional warranty. HP shall not be liable for technical or editorial errors or omissions contained herein.

4AA1-6157ENW Rev. 1, August 2008

